

SUMMER 2021



Presidents Message

By Marty M

Summer is upon us and it appears we are finally seeing a brighter future with Covid almost behind us.

If you have noticed property in our area has been selling quickly with a lot of new folks coming to our little community. I am encouraging all of our members to talk to your new neighbours, let them know that we are community based and that pretty well all of the facilities are paid for and cared for by volunteers so it is important to take care of what we have. The government only supports our work but will not do it for us. If we stop caring for it, it will overgrow, the picnic and washrooms will be removed and we will have a large community with unsafe lake accesses.

For most of the accesses we have volunteers who have offered to care for them but we need more help. I know many are part timers and/or work full time so need their time away to have fun and rest but we are not asking for much, only a few hours every now and then. For those who have now retired and are here a lot more, your time, expertise in your experiences are most valuable and it would be a great honor that you share some of your time with us to improve our community.

Our Community and Advertising board on Mahood and Horse Lake has been fixed with thanks to Jack for bringing his machine, Marcel who came during work hours bringing his employee Mathew, Ken Schmidt & Ken Swaffield, Chris, Peter, Dave, Richard, Frank, Jane and myself.

We will be constructing a roof over the board sometime during the summer hoping to protect it a bit further, so watch for the email in case you are able to give a hand.

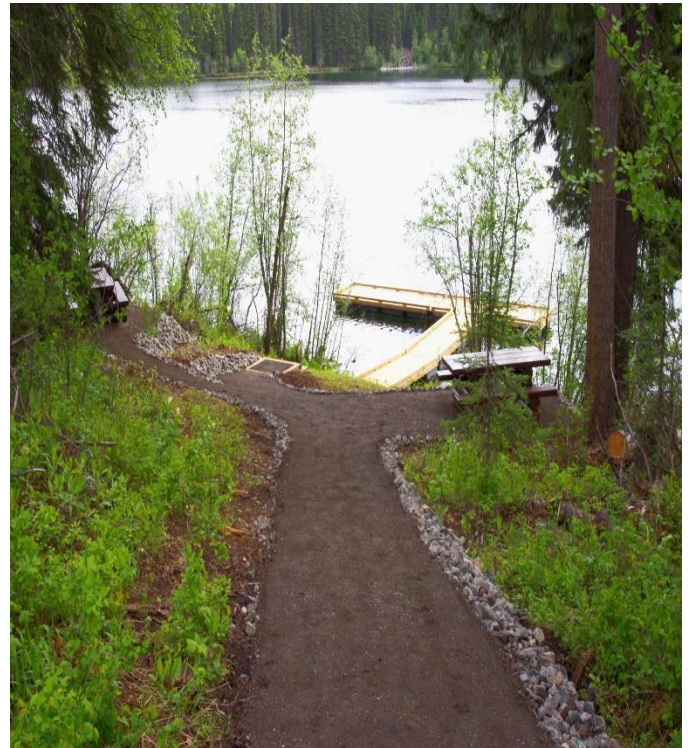




Lovely addition to the sign is the artwork of Ken Swaffield. Thanks Ken, for “whipping this up” so quickly.

An additional thank you to Ken Schmidt for fixing the small bridge located by the Fire Sign on Mahood.

When you have some time, check out the new fishing wharf at Hathaway Lake. The short trail is finished with picnic tables down by the lake. For those launching your boat, take note that you must use 4 wheel drive. We were mandated to use washed rock and unfortunately does not pack well. We have gone to the government to see if they are able to come up with a solution, but no luck yet at this time.



Don't forget the picnic area and trail to the point at the Sulphurous Boat Launch on Pettyjohn. It is one of the most beautiful spots at Sulphurous. For those who love Kayaking, for something different, do the short portage through Rainbow Park between Deka and Sulphurous.

road that will be maintained so the more it is used, the rougher it will get.



We are also looking at a possible upgrade to Access 3 at Higgins lake in order to accommodate wheelchair accessibility. Will keep you posted. In the mean time, enjoy the fishing wharf on Access 3 and picnic areas at Access 1 and 3.

Please remember to respect our roads, slow down, use the trails and not the roads for your off road vehicles. Let your visitors and children know the rules. Please do not use the Womack emergency road access for your regular vehicles or as a short cut. This road must stay in good condition in case we need to use it as an escape route. It is not a

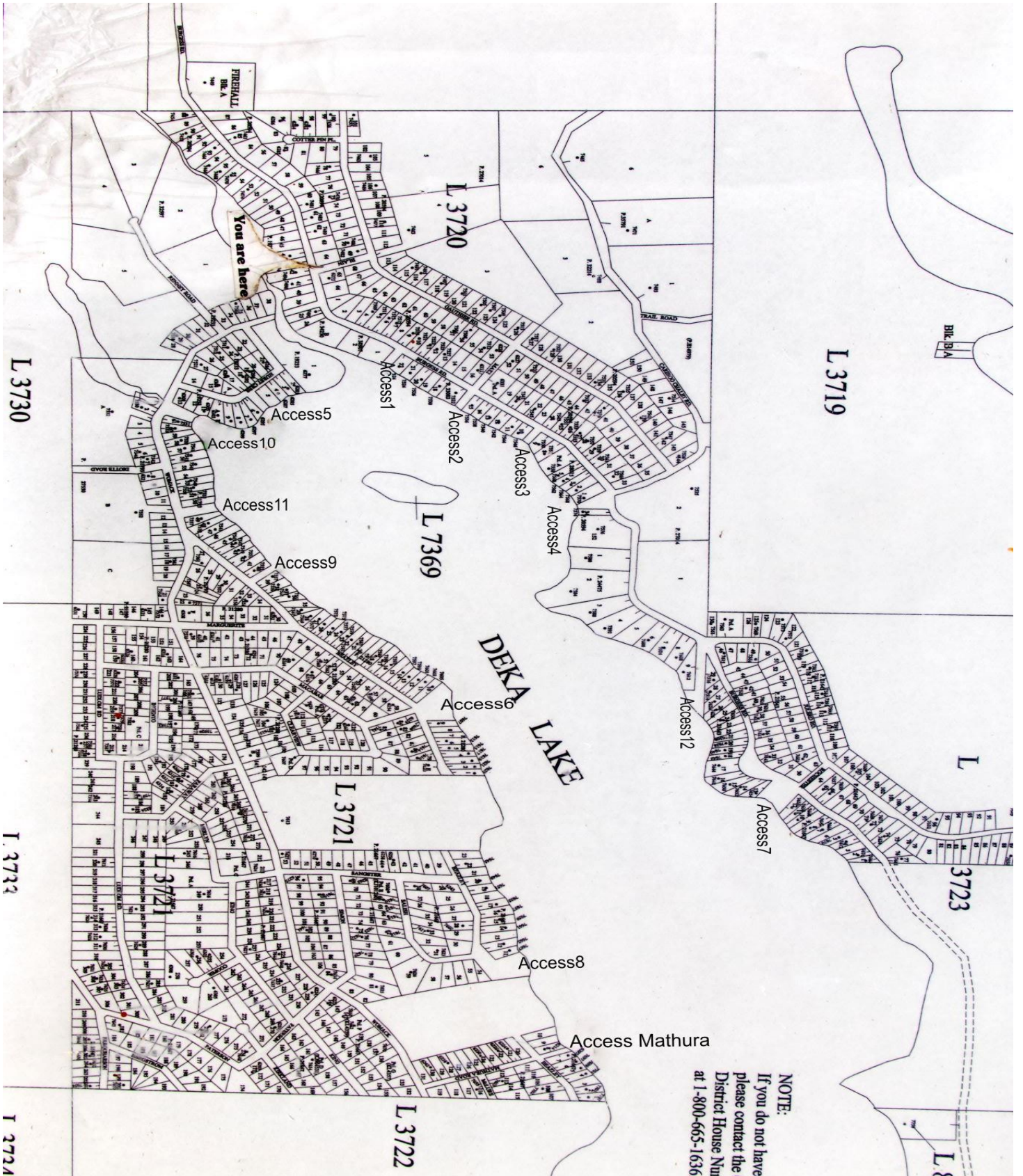
Our recycling program is still up and running and we appreciate everyone who drops off their refundable recycling to the **Deka Lake Fire hall**. Due to the cancellation of the fishing derbies our fundraising efforts have been considerably reduced so we very much appreciate your donations to recycling, your payment of local dues and letting your new neighbours know about us.

Remember we are always looking for new ways to promote our website, pictures, stories that you may have as well as any functions or activities you would like to post.

Please be safe, be kind, be respectful and stay healthy.

Marty M
President

MAP OF THE LAUNCHES AND ACCESSES



All the boat launches and accesses have picnic tables. Some have 2.

1, 3, 9 and 11 are accesses only.

2,4,5,6,7,8,10,12 and Mathura are launches as well.

6,7,8, and 12 have portapotties.

Access 3 at Higgins has a fishing dock and portapotty

Boat Launch at Sulphurous has picnic tables, outhouse and walking trail.

Picnic area on Hathaway has 2 tables, fishing dock, outhouse and walking trail.

Check them out and enjoy them for swimming and picnics.

HARD CORE KOKANEE GROUP

Members of the Hard Core Kokanee Group will be having their 2 annual fishing derby at Deka on Saturday July 3. This is a facebook group started 3 years ago by C.J.Colger and has grown to more than 3000 members. The admins are CJ Colger, Mike Pettenger and Ken Kineshanko. Together, they bring 15 years plus of organizing functions together, raising funds for local organizations and food banks, whether by Quad Runs or Fishing Events. " For us it's a passion and a way to give back. Seeing first-timers and especially kids is what really motivates us. Feel free to join our Facebook Group, ask questions and add positive input, as we are always learning all the time."

This year, they have chosen Deka Lake and District Ratepayers Association to be the recipients of the derby's proceeds. This is wonderful news for us. It's much needed cash to put back into the community.

Let's Cheer them on.

Camp Deka- Canoeing the Big Lake

The canoe; so much has been written about it by a variety of authors over the years. The canoe is one of the most versatile crafts I ever encountered. When we were campers, waterfront time was all about the canoe. All our various camp activities offered challenge levels for the camper to strive to improve his skills. If I remember correctly, the levels for the canoeist were, the Paddler (level 1), the Canoeist (level 2) and the Sterns men (level 3).

Each level challenged the camper in different ways. The lake was our training ground. In my first couple of summers canoeing out to the Sunken Island (located to the northeast of the camp), known now as the big shoal, was a great adventure. We were paired off in the canoes, each taking a turn in the bow and stern. One of the first skills we learned was how to trade positions in the canoe. Keeping our center of gravity low, the bow person would crawl over the stern person. Then the stern person would move forward to the bow. At the Sunken Island we would jump out and touch the bottom then we would need to practice getting back in.

As we got older and stronger, canoeing across the lake to the teepee site became a morning outing to go to Echo Bay. The longer paddle gave us a chance to practice more strokes and work with the wind as we crossed the lake. This was all part of the Paddler level.

As we moved to the Canoeist level, we planned our out trips to go by canoe. A great location for this was 30-30; named because of finding shot gun shells there. It is located high on a rocky ledge at the far northeastern end of the lake. We had to figure out how to get the canoes out of the lake and store them safely on the steep banks. On these trips we also practiced canoe-sailing when the wind was strong enough. Canoe-sailing involved rafting the canoes together, usually 4 at the most. Inside bowmen would hold the canoes together while the outside bowmen would hold the sail. At the stern, the two outside sterns men would be the rudders to keep the raft aligned with the direction of the wind. At 30-30 we also learned how to make shelters using our canoes to keep us dry in Cariboo rainstorms.

To the south of the camp, Brown's Island or Bonaparte Point was a popular out trip destination. On these trips the wind usually played a role in our adventure. The Island was a great place to camp and play "kick the can". When camping on the Island we used one of the canoes as a barge to get wood from the point to not deplete the Island.

Finally, if you spent enough summers at camp, you would get your Sterns men level. This involved a lot of individual work. We learned how to solo paddle a swamped canoe safely to shore. We learned how to empty the canoe when it was filled with water in the middle of the lake, and then move it to shore to finally drain the water and turn the vessel back on its proper side. For the Sterns men level, we had to portage the canoe, solo, for ½ mile. As a final test, we had to paddle solo down to Trail's End, located south of the camp on the western shore.

As I look back on my years at Camp Deka, I realize that all those skills that I learned as a young boy, I still use to this day on my property here at Deka Lake. I have passed those skills on to my own children, so that the memory of Camp Deka can continue to live on.

There is a Welcome Wagon at Deka lake!!



If you're new here and can read this and we've missed you, let us know. If you have a new neighbour, or know someone who is new, call us. If you don't really know them, an address will do, first name would be nice, too.

We want to welcome everyone into our community, whether they're part time or full time residents.

Kerrie 250-593-0067

Jocelyne 250-593-0059

THANK YOU

Thank you all for being a ratepayer member. Your annual dues are very much appreciated at this time. With the Sulphurous Lake Derby, Deka Lake Derby and BC Day activities being cancelled yet again, we've lost major sources of income. We've also lost 3 main ways of continuing your membership. Dues, which are due at the end of July can be made by e-transfer to Lorna at dekalakeanddistrictratepayers@gmail.com or by using the form at the end of the newsletter. Tell your neighbours about our organization. It's an inexpensive way to give back to the community.

Thank you to all the volunteers who are helping around the community. It's the little things that really help like picking up litter at the lake accesses. Some accesses have garbage cans. If you see one that's full, grab the garbage next time you go to the dump.

We hope to see you all this summer enjoying everything we have here. Now that Summer is finally here, keep an eye on the fire rating board coming up Mahood Rd. and please be careful in the woods. Too many of us remember 2017. At the moment only campfires 1/2mx1/2mx1/2m are permitted. Open burning and fireworks are banned until October. That could change so check this page

for updates.
<http://bcfireinfo.for.gov.bc.ca/hprScripts/WildfireNews/Bans.asp> . And please drive slowly on Womack from Mathura to Windy. It's an emergency escape route for more than half the homes here.

Shedding Light on Grid Connected Solar PV Systems Ben Giudici

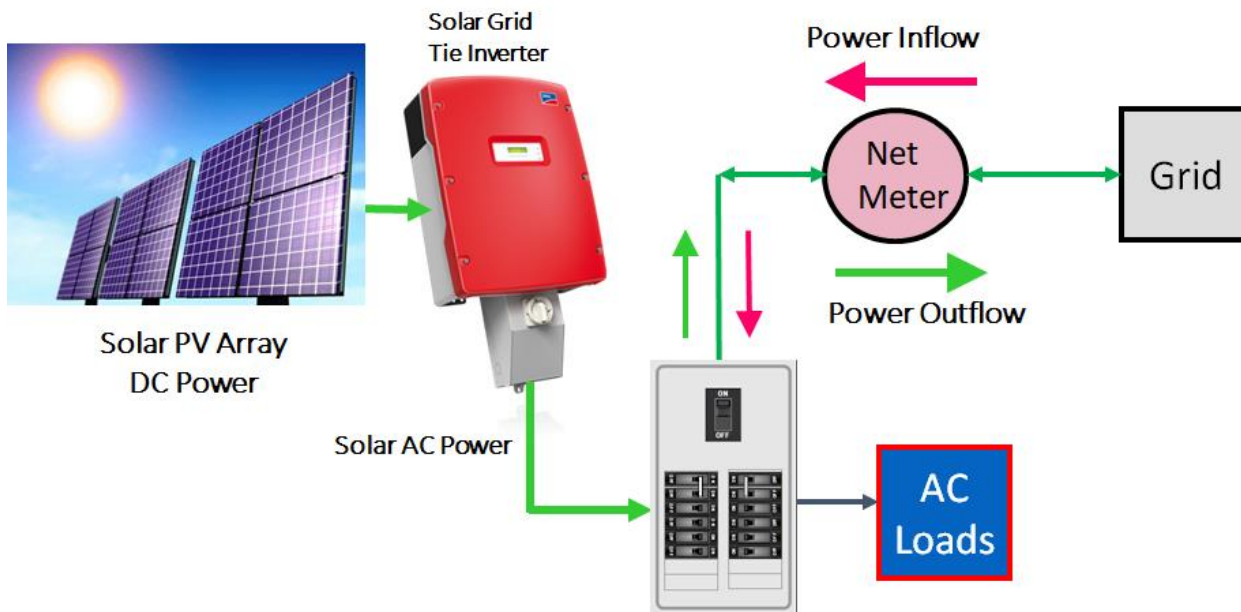


Figure 1: Grid Connected Solar PV System with Net-Metering

'PV' is the common abbreviation for the term "photo-voltaic"; describing materials and devices that can produce electricity from sunlight. Modern day solar panels are a popular silicon-based PV technology used world-wide to generate electricity for both off-grid and grid-connected applications. Off-grid solar PV systems create electricity where electric utility service is not available. Grid connected solar systems on the other hand, generate electricity in parallel with the local electric utility, reducing a customer's dependence on grid electricity.

In BC, solar PV systems may be considered for grid connection with suitable review and approvals under the Net-Metering programs of BC Hydro, FortisBC, and various municipal electrical utilities. The basic configuration and operation of grid-

connected PV systems under Net-Metering is shown the block diagram of Figure 1.

At the heart of a Net-Metering system is the utility Net-Meter which accounts for power flow in either direction by separately measuring both inflow from the grid and outflow to the grid. During daylight hours, the solar array creates DC (Direct-Current) electricity which flows into the solar grid-tie inverter.

The inverter converts DC solar electricity to AC (Alternating Current) for use in the building,

delivering it into the main electrical panel in synchronism with the electrical supply from the grid. Throughout the day, solar inverter AC power actively reduces the grid power inflow needed to meet AC load demand; lowering necessary utility energy purchase. At times when available solar power exceeds building needs, the surplus solar power flows out into the grid, accumulating utility energy credits.

At the end of each billing period Net-Metering customers are charged for their **“Net-Energy Consumption”**; i.e. kilowatt-hours of Energy Inflow minus kilowatt-hours of Energy Outflow. In essence, Net-Metering allows a solar PV equipped building to use the grid both to supply energy in times of need, and to store energy for later use in times of surplus. As a result, any electricity produced by the sun has the same value to a Net-Metering customer as if it had to be purchased from the utility.

As BC Hydro residential customers, we are billed on a two-step structure as shown in Figure 2; at the lower STEP 1 rate for our first 22 kWh/day of use and the higher STEP 2 rate beyond 22 kWh/day. It is common for home owners reliant on any form of electric heat or who regularly use air conditioning, to find themselves consistently into STEP 2. Unless of course they have installed a grid-connected solar PV system expressly designed to lower annual STEP 2 consumption.

dependent on system size, the mix of STEP 1 and STEP 2 energy consumption being offset with solar PV, and the extent of year-round shade-free solar access at the site. Sure to add additional traction is the Canada Greener Homes Grant program announced earlier this month, making up to \$5000 available to BC homeowners towards the cost of a solar PV system retrofit, making the investment even more attractive.

Installation costs (without grants) range from \$5000 and upwards dependent on desired solar PV system size and impact. As an example, budget cost for a 6 kWp (6000 watts) solar PV system is about \$13,200 (\$2.20 per watt). In the Cariboo, properly installed solar PV systems will conservatively harvest 1100-1160 kWh/kWp per year. This is 6600-6960 kWh for a 6 kWp system; up to \$1034/year savings at today’s STEP 2 rate. Cost-per-watt tends to drop with larger systems.

We are often asked how winter solar PV system is impacted due to shorter days and potential snow cover. In fact, available monthly solar energy harvest is not constant but varies seasonally based on the sun’s path through the sky and the distance sunlight travels to reach us; as shown in Figure 3. Not surprisingly, much less solar energy is available to harvest through the winter months Nov-Feb. During these low production solar months, we enjoy the benefits of being grid connected purchasing energy as needed knowing the larger harvests of Mar- Oct lie ahead, allowing over-production with energy storage into the grid for later use if desired.

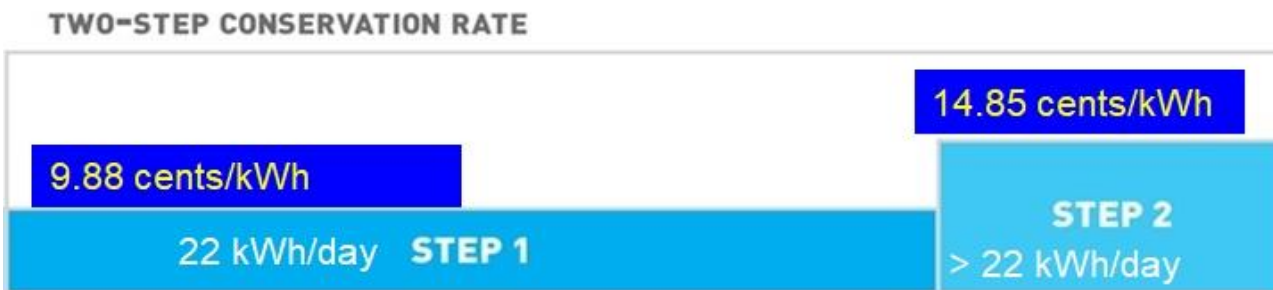


Figure 2: BC Hydro Residential Conservation Rate 1101 at April 1, 2021– GST Included

Grid-connected solar PV is becoming an increasingly popular investment with BC home owners as solar PV costs fall, electrical energy costs continue to rise, and the global shift towards cleaner energy sources world-wide gains momentum. Based on an assumed 30-year life, residential solar PV system internal rate of return on investment (IRR) ranges between 4% - 7%

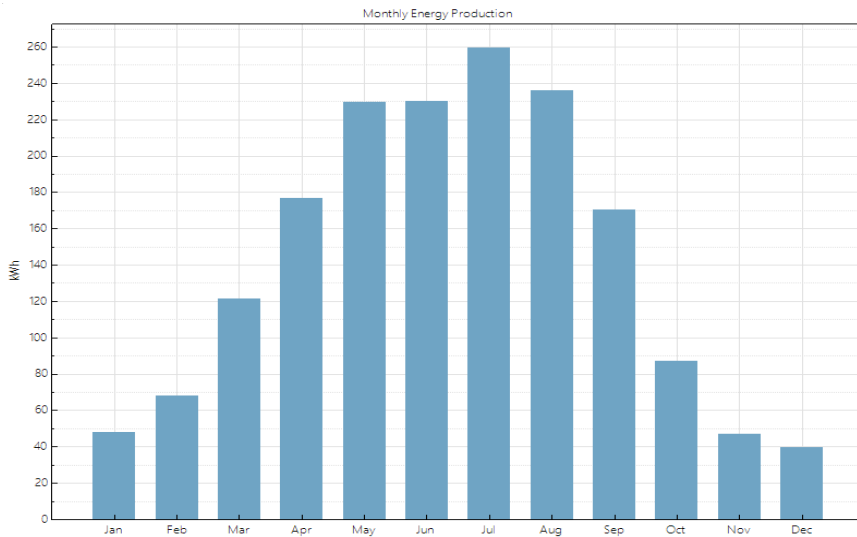


Figure 3: Typical Monthly Solar Energy Harvest Variations - BC Cariboo Region

Based in Kamloops BC, Riverside Energy Systems has been providing solar energy solutions to our customers since 1995. We would be pleased to answer any questions you might have about solar PV systems and invite you to connect with us.

Ben Giudici - Director
 Riverside Energy Systems
 969G Laval Crescent
 Kamloops, BC
 250-578-0620
info@riversideenergy.ca
www.riversideenergy.ca

Finally!! Finally, summer is here and once again we can enjoy swimming in our lakes, sounds of laughter and music travelling across the water along with the smell of BBQ and campfires.

There is no question that the winter and past months have been very challenging. While things have improved, we have seen much frustration around travel bans and advisories.

People will be craving a visit to our region and will be fast to pack their vehicles and join us here in the Cariboo. I believe that we will see higher numbers of visitors this year and will be happy that our tourism sector will enjoy the much-needed benefit of that traffic.



Lorne Doerkson, MLA

I am grateful to all our constituents for the patience that you have shown with respect to recent ravel bans and confusion around those bans. Particularly, for those of you who join us

for the summer months - who may have lost time here in the Cariboo because of those bans.

We have had several challenges over the past years, covid, wildfire and flooding. It is fire, that now worries me and with a possible increase in visitors, I believe we could see an increase in fire risk as well.

Please be vigilant to keep an extra eye out for situations that may cause forest fires and report quickly. I ask residents and visitors alike to be extra careful while enjoying the beautiful Cariboo. Be sure your fires are extinguished completely and you are aware of and obey all fire bans and regulations, they are made to keep us safe.

I am always available and happy to speak with you, either in person at my 100 Mile Office (by appointment) or on the phone.

Enjoy your summer in the Beautiful Cariboo Chilcotin

Lorne Doerkson , MLA

100 Mile Office, 7-530 Horse Lake Rd. 250-395-3916

DEKA LAKE & DISTRICT RATEPAYERS ASSOCIATION
Renewal Membership form

Please Print

Year: _____

Name(s): _____

Only complete information below if amending membership information already on file.

Lake Address: _____

Mailing Address: _____

City: _____ Province: _____ Postal Code: _____

Telephone: Full-time residence _____ Lake: _____ Cell: _____

Email Address: _____ Receipt? No Yes

Membership Fee: Family \$10.00 Single \$7.00.

We accept e-transfers to dekalakeanddistrictratepayers@gmail.com (ensure you email your preferred security word prior to sending the transfer), cash or cheque, drop off or mail to
DL & DRA c/o 7524 Burgess Rd, Lone Butte, BC V0K 1X3

Thank you for your community support!

